

State of Wyoming Corner Record

(In compliance with the CORNER PERPETUATION AND FILING ACT, Wyoming Statutes, 1977,
Section 36-11-101, et seq., and the Rules and Regulations of the Board of Registration for Professional
Engineers and Professional Land Surveyors)

The reverse side of this form may be used if more space is needed.

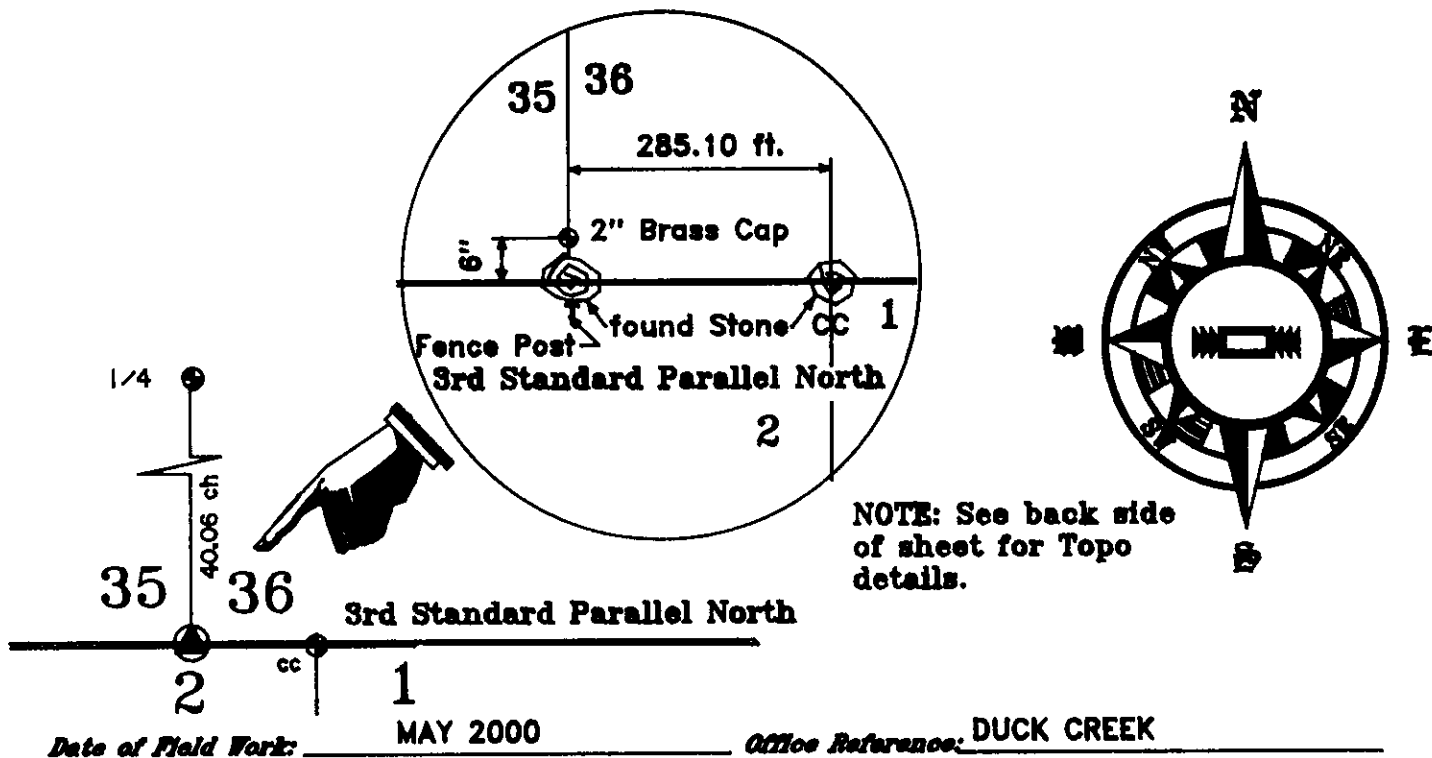
The Record of the original survey and the citation of the source of the historical information (if the corner is lost or obliterated). The description of the corner monumentation evidence as found and/or the monument and it's accessories as established to perpetuate the location of this corner. A sketch of the relative location of this Monument, accessories, and reference points with the course and distance to adjacent corner (s) (if determined during this Survey). The Method and Rationale used for the reestablishment of lost and obliterated corner.

G.L.O.: West between Section 1 & 36 of Townships 12 & 13 North of Range 68 West along the Third Standard Parallel North.

17.60 ch. to dry run course North; 40.00 chains Set Granite Boulder Stone 14X8X6 for 1/4 corner; 80.00 chains Set Granite Boulder Stone 18X10X7 for Standard Corner of Sections 35 & 36. (contract date: AD: 1887)

FOUND: Granite Boulder 12X18X8, well set on hillside South of Goose Creek and South of a trail running along a fence South of Goose Creek. The 1/4 corner common to Sections 35 & 36 lies N 00°09'16" a distance of 40.06 chains (2644.16 feet) [805.939 Metres] and the Closing Corner for Sections 1 & 2 of T.12 N., lies S89°37'26"E a distance of 4.32 chains (285.10 feet) [86.898 Metres].

Set a 5/8"X32" rebar with a 2" Brass Cap marked W.C. 35/36, Std Cor. T.13N. R.68W., 2000, LS3047, 6" North of the stone. Painted the stone YELLOW and set a steel "T" post as a witness, also painted yellow.



Cross Index Diagram

T.13 N. R.68 W. of the 6th P.M.

	1	2	3	4	5	6	7	8	9	10	11	12	13	14	15	16	17	18	19	20	21	22	23	24	25
A																									
B																									
C																									
D																									
E																									
F																									
G																									
H																									
J																									
K																									
L																									
M																									
N																									
O																									
P																									
Q																									
R																									
S																									
T																									
U																									
V																									
W																									
X																									
Y																									
Z																									

3rd Standard Parallel North
Standard Corner 35/36

Corner Name: Corner **Section:** 2 **T.13 N. R.68 W. 6th P.M. Cross Index No.** Z~21

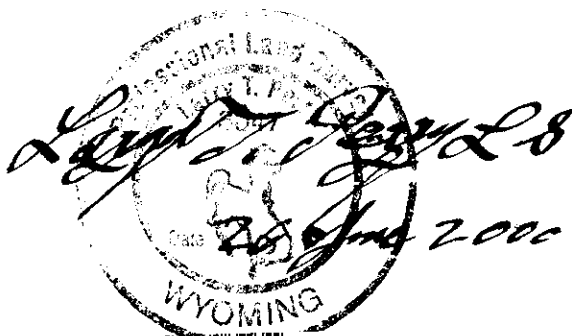
GCDB 800100

Firm/Agency, Address

Terrestrial Surveying & Mapping Co.
"Your Friendly Neighborhood Surveyor"
1127 Terry Ranch Road
Cheyenne, Wyoming 82007
Telephone Number: (307) 634-9360

This Corner Record was prepared by me or under my direction and supervision.

SEAL & SIGNATURE



RECORDED 6/26/2000 AT 10:27 AM REC# 276187 K# 1558 PG# 4
DEBRA K. LATHROP, CLERK OF LARAMIE COUNTY, WY PAGE 1 OF 2

